



THE ROLLINS I

1690 sq. ft.

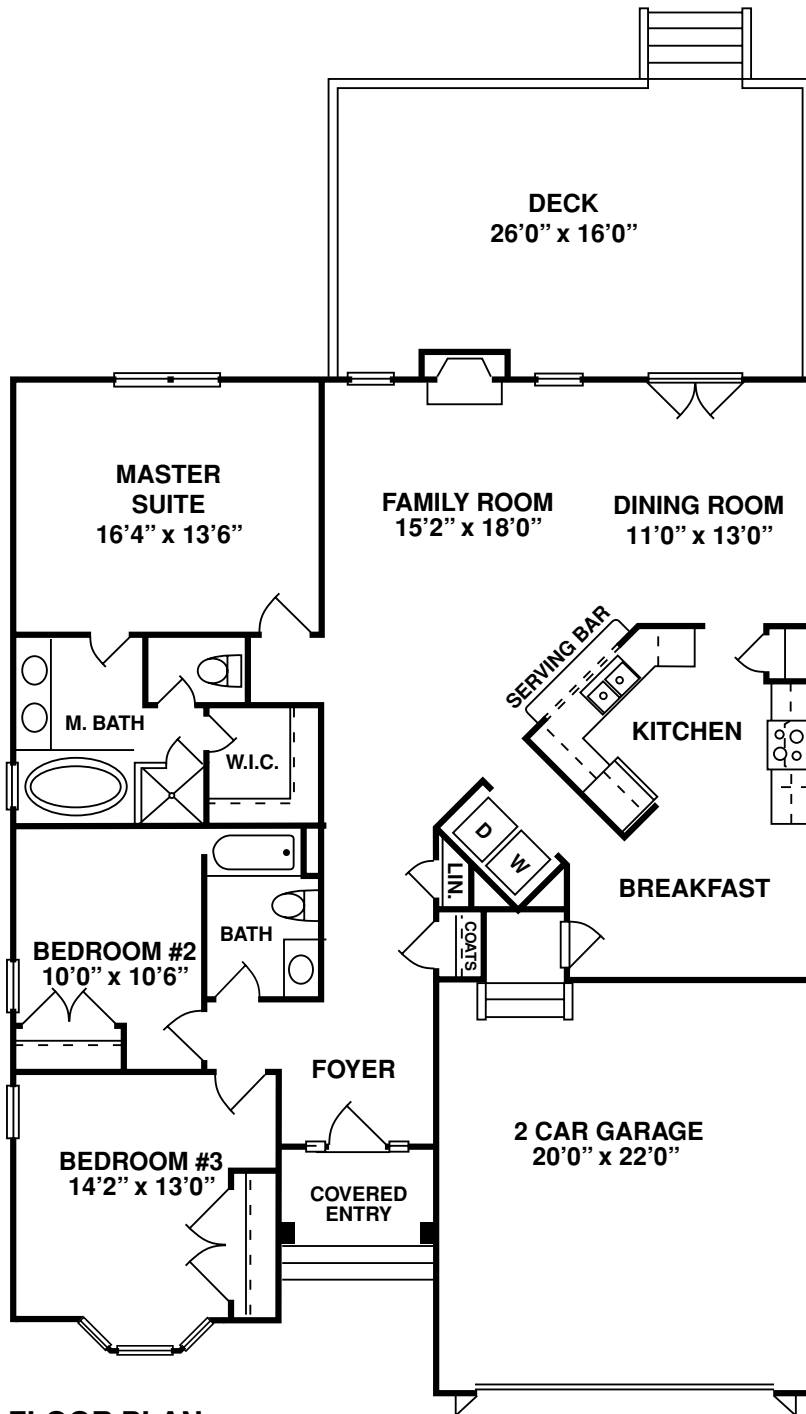
- *3 Bedrooms*
- *2 Baths*
- *Great Room/Dining Room/ Kitchen with pass thru*
- *First Floor Master Bedroom*
- *2 Car Garage*
- *Gas Fireplace*

Rollins
Construction

Artists Rendering. All plans, details, square footage, and renderings are approximate and subject to change. Illustration may not represent finished details.



THE ROLLINS I



FLOOR PLAN

Rollins Construction



Artists rendering. All plans, details, square footage, and renderings are approximate and subject to change. Illustration may not represent finished details.